

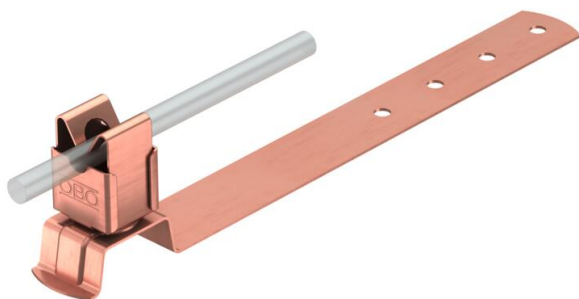
# Technical data sheet

## Roof conductor holder for tiled roofs, Rd 8

Item number: 5216192



- Conductor holder from copper plated stainless steel (V2A)
- Including drill hole in bottom section for quick installation



**Cu** Copper

### Master data

Item number	5216192
Type	157 F-CU 230
Description 1	Roof conductor holder
Manufacturer	OBO
Dimension	8mm
Material	Copper
Smallest sales unit	10
Unit of quantity	Piece
Weight	10.3 kg
Weight unit	kg/100 pc.
CO2 Footprint (GWP) Cradle-to-Gate	0,2056 kg CO2e / 1 Piece

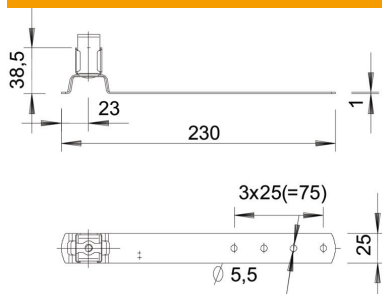
# Technical data sheet

## Roof conductor holder for tiled roofs, Rd 8

Item number: 5216192



### Dimensions



Length	230 mm
Dimension L	230 mm

### Technical data

Application	Roof surface
Conductor fastening type	With clip
Conductor diameter, max.	8
Conductor diameter, min.	8
Mounting type	Screw-on
Mounting height	38.5 mm
Fit	Rd 8 mm
Material of the holder	Copper
Material of the support	Copper