

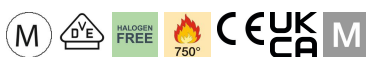
Technical data sheet

Quick clip, flame-resistant, pure white

Item number: 2149375



Flame-resistant, flush-mounted clip to accept metric steel armoured pipes and heavy-duty insulating pipes, as well as Quick-Pipe® electrical installation pipes. Universal fastening options on walls and ceilings, both in indoor and protected outdoor areas. With slot for side alignment during mounting with wood screw or knock-in anchor. Toolless pipe mounting. Can also be arranged with OBO Multi-Quick or proQuick clip. M16 - M32 size can be screwed onto M6 thread. Recommended fastening spacing 50–60 cm, for max. extraction values F at a room temperature of 20 °C, see the table.



PP Polypropylene

Master data

Item number	2149375
Type	2955 F M40 RW
Description 1	Quick clip
Description 2	flame-resistant
Manufacturer	OBO
Dimension	M40
Colour	Pure white; RAL 9010
Material	Polypropylene
Smallest sales unit	50
Unit of quantity	Piece
Weight	0.835 kg
Weight unit	kg/100 pc.
CO2 Footprint (GWP) Cradle-to-Gate	0,0374 kg CO2e / 1 Piece

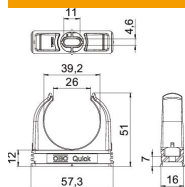
Technical data sheet

Quick clip, flame-resistant, pure white

Item number: 2149375



Dimensions



Dimension A	57.3 mm
Dimension B	16 mm
Dimension C	26,0 mm
Dimension D	39.2 mm
Dimension E	11 mm
Dimension F	4.6 mm
Dimension h	12 mm
Dimension H	51 mm

Technical data

Expandable	yes
Number of cables/pipes	1
Pull-out value	110 N
Fastening type	Screw hole
Flame-resistant	Acc. to VDE 0471/DIN 695 Part 2-1, test temperature 750°C
Closed	no
Halogen-free	yes
With inlay	no
Nominal size	M40
Quick clip installation	Durchgangsloch, auf M6 Gewinde aufschraubbar
Clamping range D, max.	40 mm
Clamping range D, min.	40 mm
UV-resistant	no