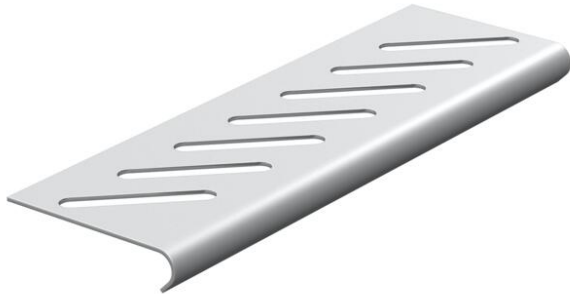


Technical data sheet

Bottom end plate A2

Item number: 7084064



For base reinforcement at the ends of the tray and as cable protection.
For fastening, please order screws, type FRSB M6x12, separately.



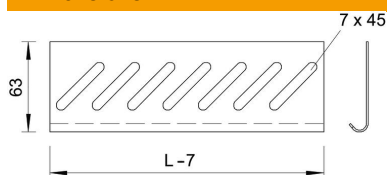
A2 Stainless steel

2B Bright, treated

Master data

Item number	7084064
Description 1	Bottom end plate
Description 2	for cable tray
Manufacturer	OBO
Dimension	B300mm
Colour	stainless steel
Material	Stainless steel
Surface	Bright, treated
Surface standard	
Smallest sales unit	1
Unit of quantity	Piece
Weight	14.1 kg
Weight unit	kg/100 pc.

Dimensions



Width	300 mm
Height	35 mm
Dimension B	300 mm

Technical data

Maintain electrical functions	no
Rustproof steel, pickled	no
Wide-span version	no