

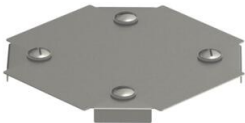
Technical data sheet

Cover for Magic cross-over A2

Item number: 7139020



Cover for cross-over with pre-mounted turn buckles.
The cover can be used with fittings of all side heights.



- A2Stainless steel
- 2BBright, treated

Master data		
Item number	7139020	
Description 1	Cover, intersection	
Description 2	for RKM 100	
Manufacturer	OBO	
Dimension	B=100mm	
Material	Stainless steel	
Surface	Bright, treated	
Surface standard		
Smallest sales unit	1	
Unit of quantity	Piece	
Weight	31 kg	
Weight unit	kg/100 pc.	

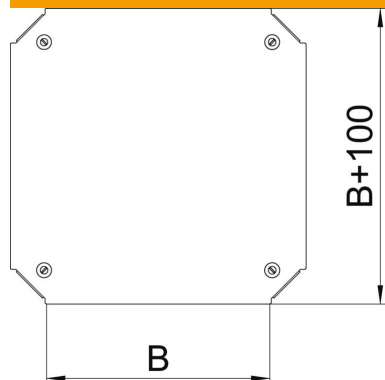
Technical data sheet

Cover for Magic cross-over A2

Item number: 7139020



Dimensions



Width	100 mm
Dimension B	100 mm

Technical data

Fastening type	Sash lock
Suitable for cable ladder	yes
Suitable for cable tray	yes
Material thickness	1.25 mm
Rustproof steel, pickled	no