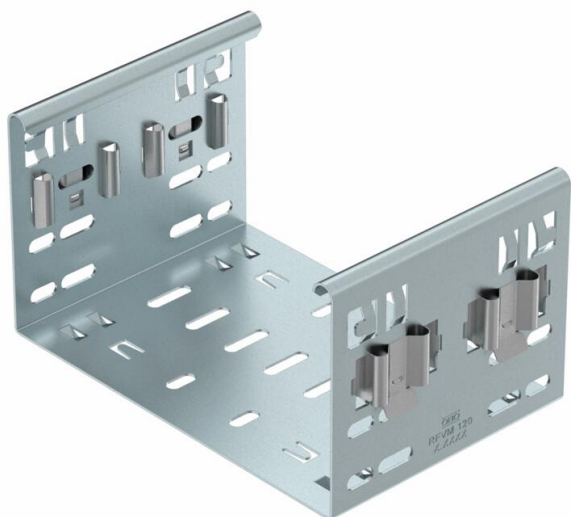


Technical data sheet

Magic straight connector DD

Item number: 6065920



Magic straight connector for direct and screwless joining of Magic fittings with a side height of 110 mm.

The straight connector is equipped with four brackets and can also be used for the direct connection with a cut cable tray with only two brackets mounted to one side. To join a cut cable tray with a fitting, an additional Magic straight connector set is needed.

The fitting connector is compatible with cable tray types MKSM, MKSMU, SKSM and SKSMU.



St Steel

DD Strip galvanised zinc/aluminium, Double Dip

Master data

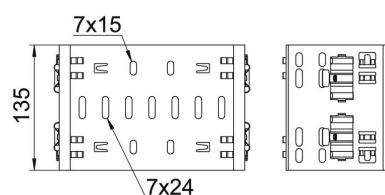
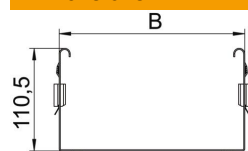
Item number	6065920
Type	FVM 150 DD
Description 1	Straight connector
Description 2	with quick connector
Manufacturer	OBO
Dimension	110x500
Colour	zinc
Material	Steel
Surface	Strip galvanised zinc/aluminium, Double Dip
Surface standard	DIN EN 10346
Smallest sales unit	1
Unit of quantity	Piece
Weight	92.6 kg
Weight unit	kg/100 pc.

Technical data sheet

Magic straight connector DD

Item number: 6065920

Dimensions



Length	135 mm
Width	500 mm
Height	110 mm
Plate thickness	1.25 mm
Dimension B	500 mm

Technical data

Version for	Straight connector
Maintain electrical functions	no
Suitable for mesh cable tray	no
Suitable for cable ladder	no
Suitable for cable tray	yes
Suitable for cable tray system height	110 mm
Adjustable connector, horizontal	no
Articulated connector, vertical	no
Rustproof steel, pickled	no
Connection type	Screwless connector