

# Technical data sheet

## Magic DD fitting connector

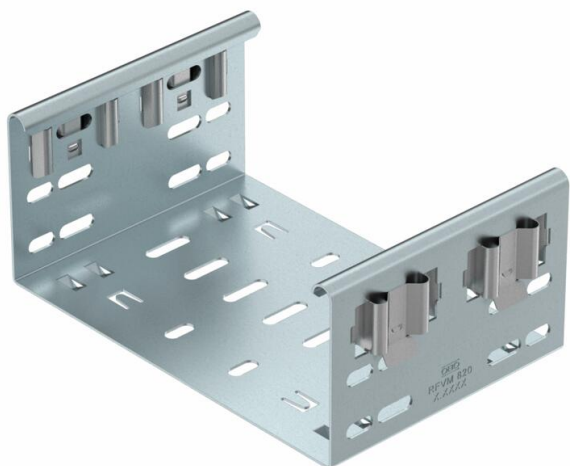
Item number: 6065816



Magic straight connector for direct and screwless joining of Magic fittings with a side height of 85 mm.

The straight connector is equipped with four brackets and can also be used for the direct connection with a cut cable tray with only two brackets mounted to one side. To join a cut cable tray with a fitting, an additional Magic straight connector set is needed.

The fitting connector is compatible with cable tray types MKSM, MKSMU, SKSM and SKSMU.



**St** Steel

**DD** Strip galvanised zinc/aluminium, Double Dip

### Master data

Item number	6065816
Type	FVM 830 DD
Description 1	Straight connector
Description 2	with quick connector
Manufacturer	OBO
Dimension	85x300
Colour	zinc
Material	Steel
Surface	Strip galvanised zinc/aluminium, Double Dip
Surface standard	DIN EN 10346
Smallest sales unit	1
Unit of quantity	Piece
Weight	62.5 kg
Weight unit	kg/100 pc.

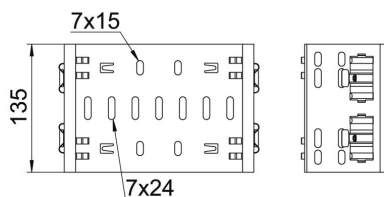
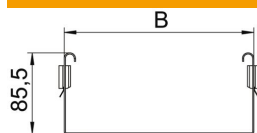
# Technical data sheet

## Magic DD fitting connector

Item number: 6065816



### Dimensions



Length	135 mm
Width	300 mm
Height	85 mm
Plate thickness	1.25 mm
Dimension B	300 mm

### Technical data

Version for	Straight connector
Maintain electrical functions	no
Suitable for mesh cable tray	no
Suitable for cable ladder	no
Suitable for cable tray	yes
Suitable for cable tray system height	85 mm
Adjustable connector, horizontal	no
Articulated connector, vertical	no
Rustproof steel, pickled	no
Connection type	Screwless connector