

Technical data sheet

Centre suspension mesh cable tray FS

Item number: 6015247



Two-part centre suspension of mesh cable trays.
When filling with cables, please ensure an even distribution. The maximum recommended mesh cable tray width is 200 mm.



- St** Steel
- FS** Strip galvanized

Master data

Item number	6015247
Type	GMA M10 FS
Description 1	Centre suspension
Description 2	for threaded rod M10
Manufacturer	OBO
Dimension	60x40
Colour	zinc
Material	Steel
Surface	Strip galvanized
Surface standard	DIN EN 10346
Smallest sales unit	25
Unit of quantity	Piece
Weight	6.83 kg
Weight unit	kg/100 pc.
CO2 Footprint (GWP) Cradle-to-Gate	0,2203 kg CO2e / 1 Piece

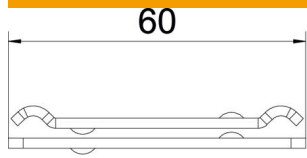
Technical data sheet

Centre suspension mesh cable tray FS

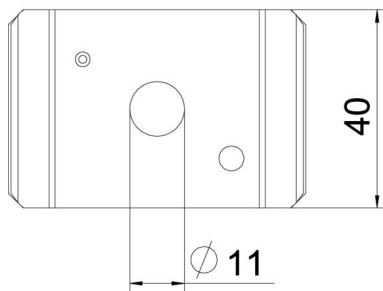
Item number: 6015247



Dimensions



Length	65 mm
Width	40 mm
Height	10.1 mm



Technical data

Version for	Suspended
Maintain electrical functions	no
Hole diameter	11 mm
Adjustable	no