

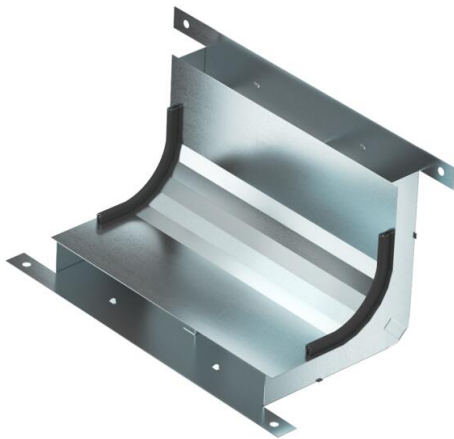
Technical data sheet

Vertical bend, two-compartment, height 28 mm

Item number: 7400633



Vertical bend, two-compartment, for vertical direction changes of screed-covered underfloor ducts (wall connections, supplies).



St Steel

FS Strip galvanized

Master data

| | |
|------------------------------------|--------------------------|
| Item number | 7400633 |
| Type | KV2 25028-2 |
| Description 1 | Vertical bend |
| Description 2 | 2 compartments for EÜK-2 |
| Manufacturer | OBO |
| Dimension | 330x177,7x177,7 |
| Material | Steel |
| Surface | Strip galvanized |
| Surface standard | DIN EN 10346 |
| Smallest sales unit | 1 |
| Unit of quantity | Piece |
| Weight | 95.41 kg |
| Weight unit | kg/100 pc. |
| CO2 Footprint (GWP) Cradle-to-Gate | 3,4507 kg CO2e / 1 Piece |

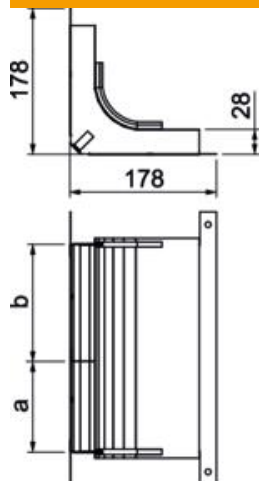
Technical data sheet

Vertical bend, two-compartment, height 28 mm

Item number: 7400633



Dimensions



| | |
|-------------|--------|
| Length | 178 mm |
| Width | 250 mm |
| Height | 28 mm |
| Dimension a | 110 mm |
| Dimension b | 140 mm |
| Dimension h | 28 mm |

Technical data

| | |
|---|----------------------|
| Number of fixed partitions | 1 |
| Number of compartments | 2 St. |
| Suitable for screed-flush closed underfloor ducts | no |
| Suitable for screed-covered underfloor ducts | yes |
| Trunking width, min. | 250 mm |
| Duct height, min. | 28 mm |
| Cross-section, draw a | 2701 mm ² |
| Cross-section, draw b | 3483 mm ² |