

Technical data sheet

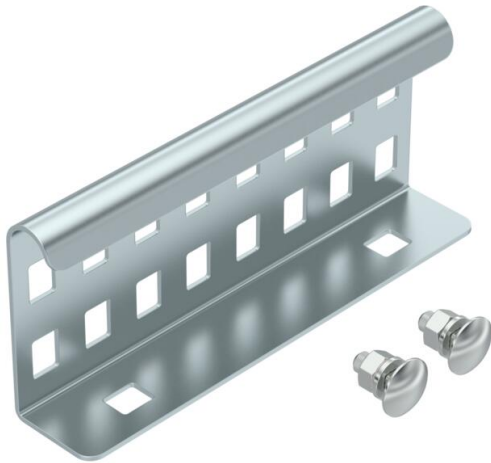
60 FT SOMY straight connector

Item number: 7189253



Straight connector as external connector to connect cable ladders and fittings with a side height of 60 mm and continuous rail perforation.

The adjustable connector ensures the continuity of the equipotential bonding.



- St** Steel
- FT SO** Hot-dip galvanised 85 µm

Master data

Item number	7189253
Type	LVG 60 FT SO
Description 1	Straight connector
Description 2	for cable ladder
Manufacturer	OBO
Dimension	64x150
Colour	zinc
Material	Steel
Surface	Hot-dip galvanised 85 µm
Surface standard	DIN EN ISO 1461
Smallest sales unit	20
Unit of quantity	Piece
Weight	25 kg
Weight unit	kg/100 pc.
CO2 Footprint (GWP) Cradle-to-Gate	0,6483 kg CO2e / 1 Piece

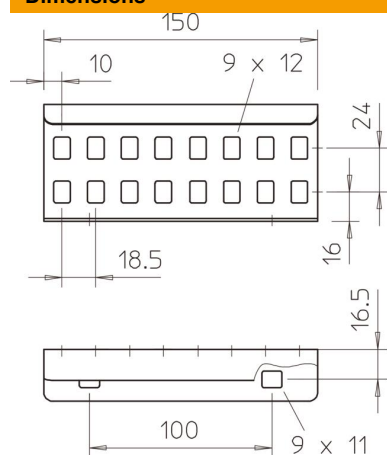
Technical data sheet

60 FT SOMY straight connector



Item number: 7189253

Dimensions



Dimension	64x150
Length	150 mm
Width	28 mm
Height	64 mm
Plate thickness	1.5 mm

Technical data

Version for	Straight connector
Suitable for mesh cable tray	no
Suitable for cable ladder	yes
Suitable for cable tray	no
Suitable for cable tray system height	60 mm
Adjustable connector, horizontal	no
Articulated connector, vertical	no
Rustproof steel, pickled	no
Connection type	Screw connector