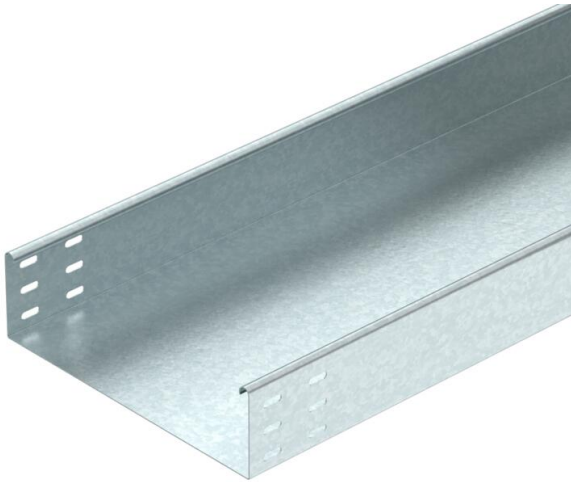


# Technical data sheet

## Cable tray MKSU 85 FT

Item number: 6064561



MKSU 85 = medium-duty cable tray system with a side height of 85 mm. Including connector, type RLVL 85.



St

Steel

FT

Hot-dip galvanised

### Master data

Item number	6064561
Type	MKSU 830 FT
Description 1	Cable tray MKSU
Description 2	unperforated, connector holes
Manufacturer	OBO
Dimension	85x300x3000
Colour	zinc
Material	Steel
Surface	Hot-dip galvanised
Surface standard	DIN EN ISO 1461
Smallest sales unit	3
Unit of quantity	Metre
Weight	417.7 kg
Weight unit	kg/100 m
CO2 Footprint (GWP) Cradle-to-Gate	9,3456 kg COe / 1 Meter

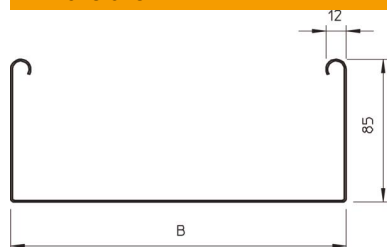
# Technical data sheet

## Cable tray MKSU 85 FT

Item number: 6064561



### Dimensions



Length	3,000 mm
Width	300 mm
Height	85 mm
Plate thickness	1 mm
Dimension B	300 mm



### Technical data

Connector version	Without connectors
Mounting system fastening type	Floor Ceiling Wall
Walkable	no
Maintain electrical functions	no
With cover	no
Mounting perforation in base	no
NATO hole pattern	no
Usable cross-section	253 cm <sup>2</sup>
Usable cross-section	25300 mm <sup>2</sup>
Rustproof steel, pickled	no
Side perforation	no
Wide-span version	no
Load test type according to IEC 61537	Type II
Type of connector, cable support system	Screwed

# Technical data sheet

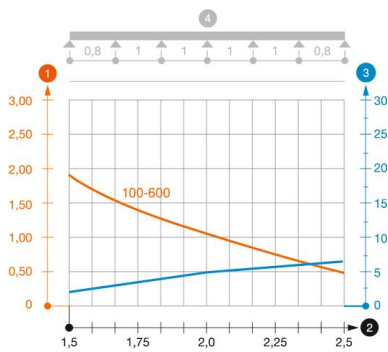
## Cable tray MKSU 85 FT

Item number: 6064561



### Loads

Insertable support spacings, min.	1.5 m
Insertable support spacings, max.	2.5 m
Support spacing 1.5 m	1.75 kN/m
Support spacing 1.75 m	1.4 kN/m
Support spacing 2.0 m	1.1 kN/m
Support spacing 2.5 m	0.5 kN/m



### Load diagram, cable tray, type MKSU 85

- 1 Permitted cable tray/ladder load in kN/m without man load
- 2 Support width in m
- 3 Rail bend in mm at permitted kN/m
- 4 Load scheme during testing
- Load curve with cable tray/ladder width in mm
- Strut bend curve according to support width