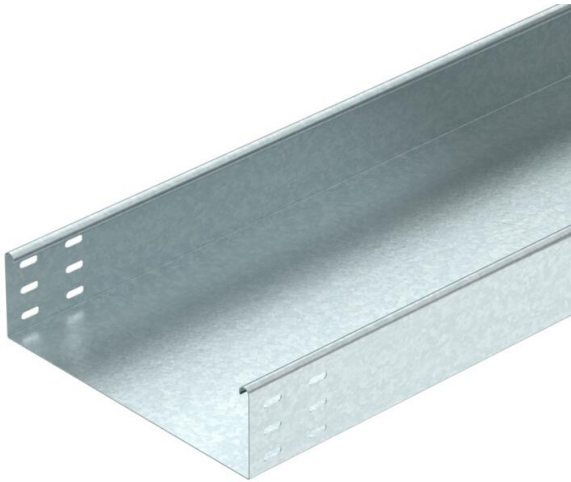


Technical data sheet

Cable tray MKSU 85 FT

Item number: 6064564



MKSU 85 = medium-duty cable tray system with a side height of 85 mm. Including connector, type RLVL 85.



St

Steel

FT

Hot-dip galvanised

Master data

Item number	6064564
Type	MKSU 840 FT
Description 1	Cable tray MKSU
Description 2	unperforated, connector holes
Manufacturer	OBO
Dimension	85x400x3000
Colour	zinc
Material	Steel
Surface	Hot-dip galvanised
Surface standard	DIN EN ISO 1461
Smallest sales unit	3
Unit of quantity	Metre
Weight	502.5 kg
Weight unit	kg/100 m
CO2 Footprint (GWP) Cradle-to-Gate	11,2311 kg COe / 1 Meter

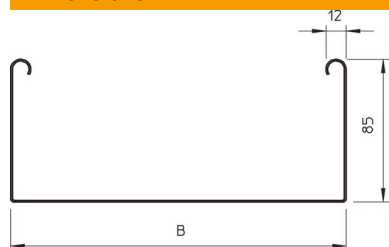
Technical data sheet

Cable tray MKSU 85 FT

Item number: 6064564



Dimensions



Length	3,000 mm
Width	400 mm
Height	85 mm
Plate thickness	1 mm
Dimension B	400 mm



Technical data

Connector version	Without connectors
Mounting system fastening type	Floor Ceiling Wall
Walkable	no
Maintain electrical functions	no
With cover	no
Mounting perforation in base	no
NATO hole pattern	no
Usable cross-section	338 cm ²
Usable cross-section	33800 mm ²
Rustproof steel, pickled	no
Side perforation	no
Wide-span version	no
Load test type according to IEC 61537	Type II
Type of connector, cable support system	Screwed

Technical data sheet

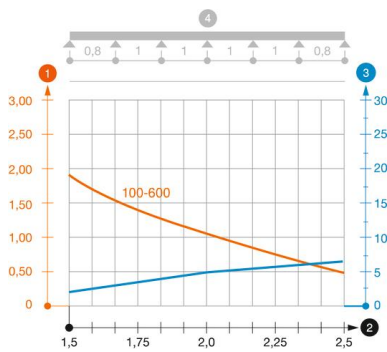
Cable tray MKSU 85 FT

Item number: 6064564



Loads

Insertable support spacings, min.	1.5 m
Insertable support spacings, max.	2.5 m
Support spacing 1.5 m	1.75 kN/m
Support spacing 1.75 m	1.4 kN/m
Support spacing 2.0 m	1.1 kN/m
Support spacing 2.5 m	0.5 kN/m



Load diagram, cable tray, type MKSU 85

- 1 Permitted cable tray/ladder load in kN/m without man load
- 2 Support width in m
- 3 Rail bend in mm at permitted kN/m
- 4 Load scheme during testing
- Load curve with cable tray/ladder width in mm
- Strut bend curve according to support width