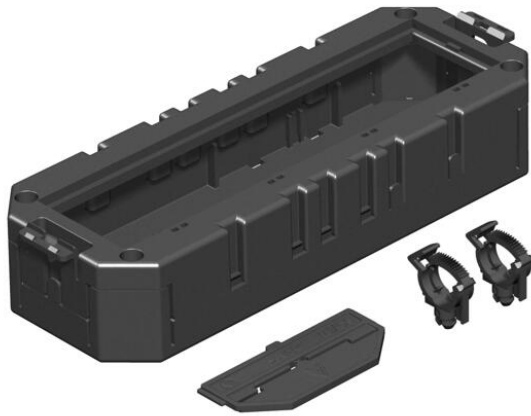


Technical data sheet

Module support with protective housing for Modul 45® devices, system length 208 mm

Item number: 7429139



For the installation of up to 4 accessories of type Modul 45 in flush-mount units. Installation instead of a GB3 mounting box. The module support is closed in a downwards direction by two protective housings with a division 3+1 or 2+2. The scope of supply contains two strain reliefs and one separating retainer.

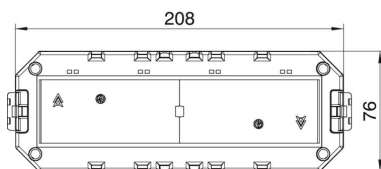
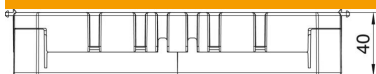


PA Polyamide

Master data

Item number	7429139
Description 1	Modul support 45, closed
Description 2	for 2+2 Modul 45 accessories
Manufacturer	OBO
Dimension	208x76x40
Colour	Graphite black; RAL 9011
Material	Polyamide
Smallest sales unit	1
Unit of quantity	Piece
Weight	11.6 kg
Weight unit	kg/100 pc.

Dimensions



Technical data sheet

Module support with protective housing for Modul 45® devices, system length 208 mm

Item number: 7429139



Technical data

Number of installable devices	4
Floor plate	no
Seal installation option	no
Suitable for raised floor installation	yes
Suitable for screed-flush closed underfloor ducts	yes
Suitable for screed-covered underfloor ducts	yes
Suitable for cavity floor installation	yes
Suitable for underfloor ducts	yes