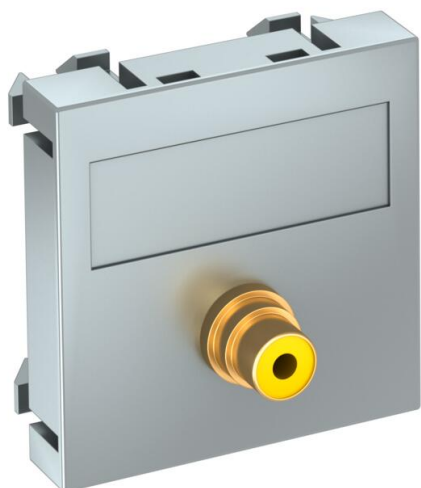


Technical data sheet

Video cinch connection, 1 module, straight outlet, as soldered connection, aluminium-painted

Item number: 6104976



Multimedia support with one cinch connection socket for composite video, straight cable outlet, with labelling panel, cinch socket (RCA) with soldered connection, colour coding yellow. Support plate with locking fastening, suitable for horizontal and vertical installation in the system environment.

PC Polycarbonate

Master data

| | |
|------------------------------------|--------------------------------|
| Item number | 6104976 |
| Type | MTG-R L AL1 |
| Description 1 | Multimedia support video cinch |
| Description 2 | 1xsocket with sold. connection |
| Manufacturer | OBO |
| Dimension | 45x45mm |
| Colour | Aluminium painted |
| Material | Polycarbonate |
| Smallest sales unit | 1 |
| Unit of quantity | Piece |
| Weight | 1.5 kg |
| Weight unit | kg/100 pc. |
| CO2 Footprint (GWP) Cradle-to-Gate | 0,0443 kg CO2e / 1 Piece |

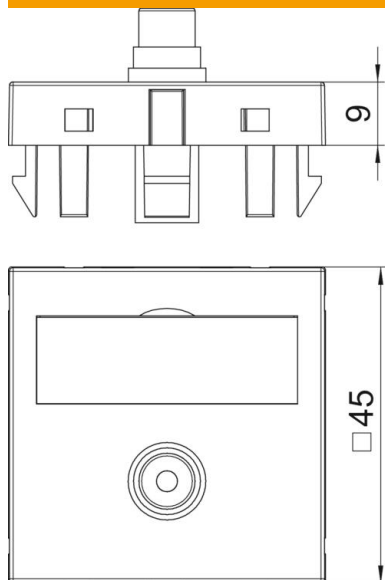
Technical data sheet

Video cinch connection, 1 module, straight outlet, as soldered connection, aluminium-painted

Item number: 6104976



Dimensions



Technical data

| | |
|----------------------|--|
| Number of units | 1 |
| Surface version | Matt |
| Fastening type | Lock |
| Halogen-free | yes |
| Hinged cover | no |
| Lamp-wire connector | no |
| With printed label | no |
| With dust protection | no |
| Protection rating | IP20 |
| Support ring | no |
| Transparent | no |
| Use | Cinch |
| Strain relief option | no |
| Combination | Basic element with central cover plate |