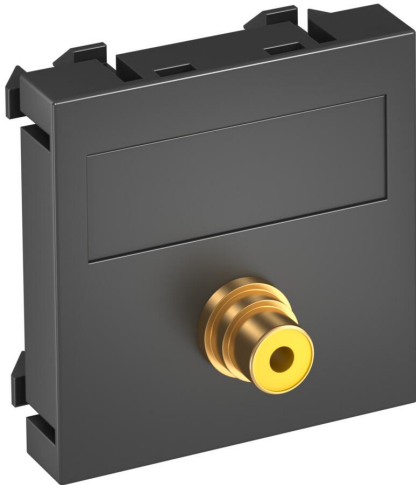


# Technical data sheet

Video cinch connection, 1 module, straight outlet, as soldered connection, black-grey  
Item number: 6104973



Multimedia support with one cinch connection socket for composite video, straight cable outlet, with labelling panel, cinch socket (RCA) with soldered connection, colour coding yellow. Support plate with locking fastening, suitable for horizontal and vertical installation in the system environment.

**PC** Polycarbonate

## Master data

Item number	6104973
Type	MTG-R L SWGR1
Description 1	Multimedia support video cinch
Description 2	1xsocket with sold. connection
Manufacturer	OBO
Dimension	45x45mm
Colour	Black-grey; RAL 7021
Material	Polycarbonate
Smallest sales unit	1
Unit of quantity	Piece
Weight	1.5 kg
Weight unit	kg/100 pc.
CO2 Footprint (GWP) Cradle-to-Gate	0,0737 kg CO2e / 1 Piece

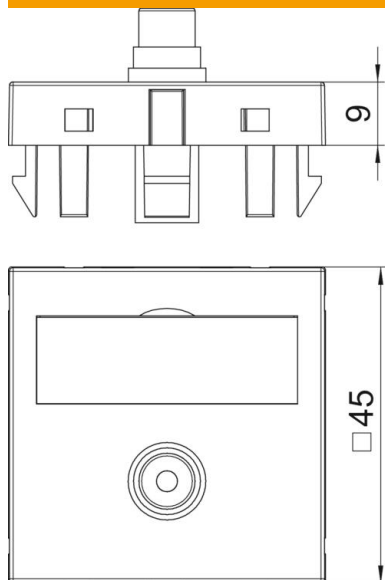
# Technical data sheet

Video cinch connection, 1 module, straight outlet, as soldered connection, black-grey

Item number: 6104973



## Dimensions



## Technical data

Number of units	1
Surface version	Matt
Fastening type	Lock
Halogen-free	yes
Hinged cover	no
Lamp-wire connector	no
With printed label	no
With dust protection	no
Protection rating	IP20
Support ring	no
Transparent	no
Use	Cinch
Strain relief option	no
Combination	Basic element with central cover plate