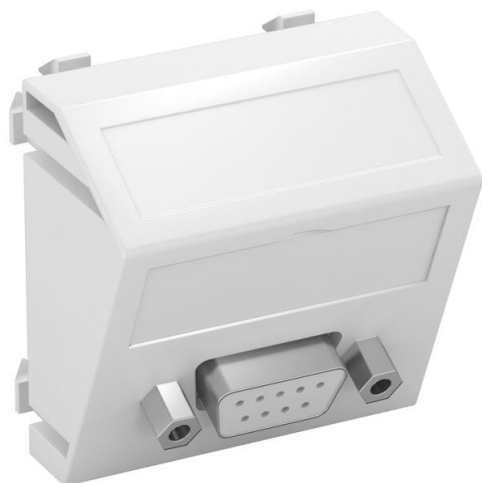


Technical data sheet

D-Sub9 connection, 1 module, slanting outlet, as screw connection

Item number: 6104646



Multimedia support with one D-Sub9 connection socket, slanting cable outlet, with labelling panel, D-Sub9 socket (RS232) with screw connection. Support plate with locking fastening, suitable for horizontal and vertical installation in the system environment.

PC Polycarbonate

Master data

Item number	6104646
Type	MTS-DB9 S RW1
Description 1	Multimedia support, D-Sub9
Description 2	socket with screw connection
Manufacturer	OBO
Dimension	45x45mm
Colour	Pure white; RAL 9010
Material	Polycarbonate
Smallest sales unit	1
Unit of quantity	Piece
Weight	2.6 kg
Weight unit	kg/100 pc.
CO2 Footprint (GWP) Cradle-to-Gate	0,1772 kg CO2e / 1 Piece

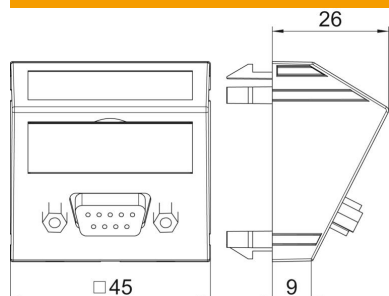
Technical data sheet

D-Sub9 connection, 1 module, slanting outlet, as screw connection

Item number: 6104646



Dimensions



Width	45 mm
Height	45 mm

Technical data

Number of units	1
Surface version	Matt
Fastening type	Lock
Labelling panel	With labelling panel
Halogen-free	yes
Hinged cover	no
Lamp-wire connector	no
With printed label	no
With dust protection	no
Protection rating	IP20
Depth	26 mm
Support ring	no
Transparent	no
Use	D-Sub miniature
Strain relief option	no
Combination	Basic element with central cover plate