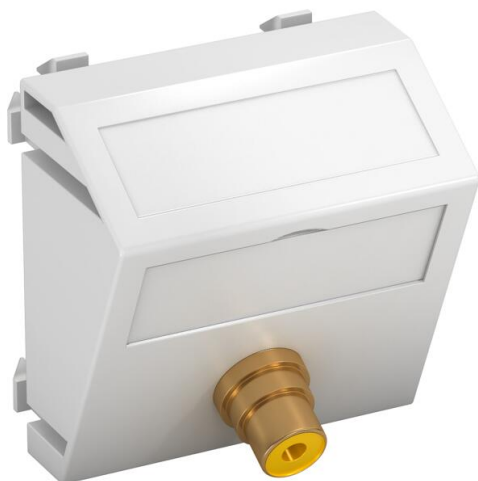


Technical data sheet

Video cinch connection, 1 module, slanting outlet, as soldered connection, pure white
Item number: 6104982



Multimedia support with one cinch connection socket for composite video, slanting cable outlet, with labelling panel, cinch socket (RCA) with soldered connection, colour coding yellow. Support plate with locking fastening, suitable for horizontal and vertical installation in the system environment.

PC Polycarbonate

Master data

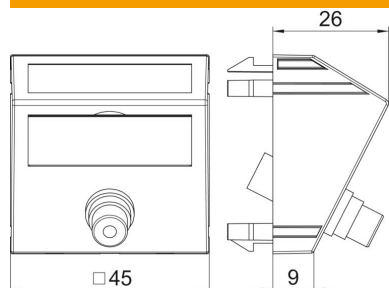
| | |
|------------------------------------|--------------------------------|
| Item number | 6104982 |
| Type | MTS-R L RW1 |
| Description 1 | Multimedia support video cinch |
| Description 2 | 1xsocket with sold. connection |
| Manufacturer | OBO |
| Dimension | 45x45mm |
| Colour | Pure white; RAL 9010 |
| Material | Polycarbonate |
| Smallest sales unit | 1 |
| Unit of quantity | Piece |
| Weight | 1.7 kg |
| Weight unit | kg/100 pc. |
| CO2 Footprint (GWP) Cradle-to-Gate | 0,1068 kg CO2e / 1 Piece |

Technical data sheet

Video cinch connection, 1 module, slanting outlet, as soldered connection, pure white
Item number: 6104982



Dimensions



Technical data

| | |
|----------------------|--|
| Number of units | 1 |
| Surface version | Matt |
| Fastening type | Lock |
| Halogen-free | yes |
| Hinged cover | no |
| Lamp-wire connector | no |
| With printed label | no |
| With dust protection | no |
| Protection rating | IP20 |
| Support ring | no |
| Transparent | no |
| Use | Cinch |
| Strain relief option | no |
| Combination | Basic element with central cover plate |