

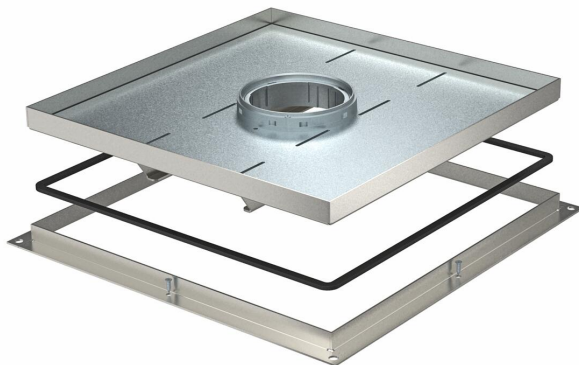
# Technical data sheet

Heavy-duty frame cassette for tube body, RKFSL, nominal size 350-3

Item number: 7409550



Heavy-duty frame cassette for tube body for the installation of accessories in the UZD350-3 in dry or wet-care floors in interior areas Load class 2 to 20 kN. The tube body is not contained in the scope of delivery.



A2 Stainless steel

## Master data

|                                    |                           |
|------------------------------------|---------------------------|
| Item number                        | 7409550                   |
| Type                               | RKF2 SL2 V3 40            |
| Description 1                      | Heavy-duty frame cassette |
| Description 2                      | for tube                  |
| Manufacturer                       | OBO                       |
| Dimension                          | 383x383x40                |
| Material                           | Stainless steel 1.4301    |
| Smallest sales unit                | 1                         |
| Unit of quantity                   | Piece                     |
| Weight                             | 1398 kg                   |
| Weight unit                        | kg/100 pc.                |
| CO2 Footprint (GWP) Cradle-to-Gate | 56,8431 kg CO2e / 1 Piece |

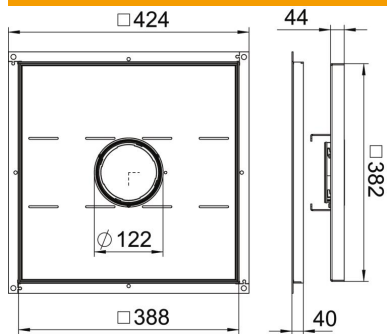
# Technical data sheet

Heavy-duty frame cassette for tube body, RKFSL, nominal size 350-3

Item number: 7409550



## Dimensions



|             |        |
|-------------|--------|
| Dimension A | 424 mm |
| Dimension B | 388 mm |
| Dimension C | 382 mm |
| Dimension h | 40 mm  |

## Technical data

|  |                             |
|--|-----------------------------|
| Cable outlet version                   | Lowerable tube body         |
| Suitable for raised floor installation | yes                         |
| Suitable for cavity floor installation | yes                         |
| Suitable for                           | Underfloor socket structure |
| Suitable for underfloor box            | 350                         |
| Length of installation dimensions      | 390 mm                      |
| Protection rating (IP) when used       | IP20                        |
| Protection rating (IP) when unused     | IP44                        |
| Protection rating IK code              | IK10                        |
| Heavy-duty version                     | yes                         |
| Heavy load class                       | 20 kN (OBO SL2)             |
| Floor covering thickness               | 34 mm                       |