

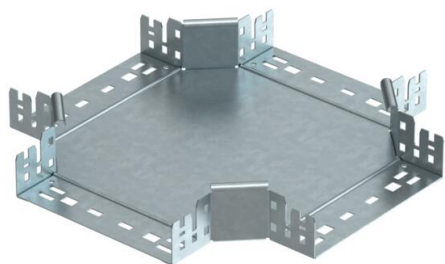
Technical data sheet

Magic cross-over 60 FT

Item number: 7027025



Cross-over with quick connector system. For all cable tray types of 60 mm side height.



St Steel

FT Hot-dip galvanised

Master data

Item number	7027025
Type	RKM 620 FT
Description 1	Cross over
Description 2	with quick connector
Manufacturer	OBO
Dimension	60x200
Material	Steel
Surface	Hot-dip galvanised
Surface standard	DIN EN ISO 1461
Smallest sales unit	1
Unit of quantity	Piece
Weight	172.7 kg
Weight unit	kg/100 pc.

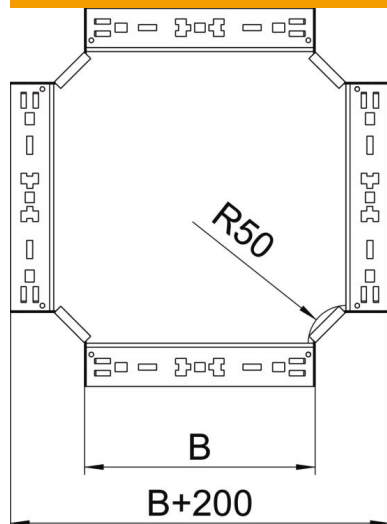
Technical data sheet

Magic cross-over 60 FT

Item number: 7027025



Dimensions



Width	200 mm
Width	8 in
Height	60 mm
Height	2 in
Plate thickness	1.25 mm
Dimension B	200 mm

Technical data

Bend (angle)	90°
Connector version	Integrated connector
Maintain electrical functions	yes
Material thickness, floor plate	1.25 mm
Change of direction	Horizontal
Rustproof steel, pickled	no
Wide-span version	no
Type of connector, cable support system	Click fastening
Rail thickness	1.25 mm