

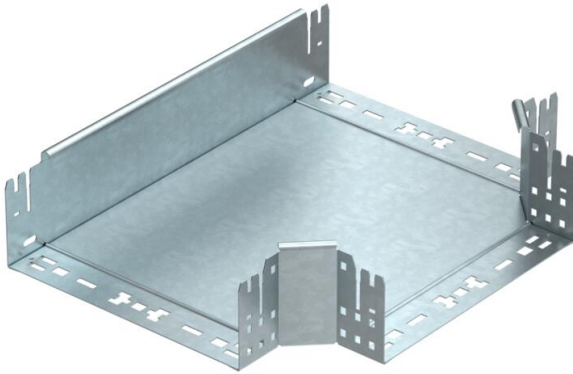
Technical data sheet

Magic tee 110 FT

Item number: 6042036



Tee with quick connector system. For all cable tray types of 110 mm side height.



- St** Steel
- FT** Hot-dip galvanised

Master data

Item number	6042036
Type	RTM 130 FT
Description 1	T-branch piece
Description 2	with quick connector
Manufacturer	OBO
Dimension	110x300
Material	Steel
Surface	Hot-dip galvanised
Surface standard	DIN EN ISO 1461
Smallest sales unit	1
Unit of quantity	Piece
Weight	295.5 kg
Weight unit	kg/100 pc.

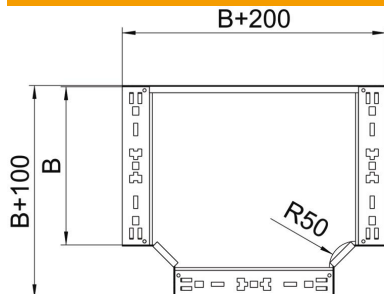
Technical data sheet

Magic tee 110 FT

Item number: 6042036



Dimensions



Width	300 mm
Height	110 mm
Plate thickness	1.25 mm
Dimension B	300 mm

Technical data

Bend (angle)	90°
Connector version	Integrated connector
Maintain electrical functions	no
NATO hole pattern	no
Change of direction	Horizontal
Rustproof steel, pickled	no
Wide-span version	no
Type of connector, cable support system	Screwed
Rail thickness	1.25 mm