

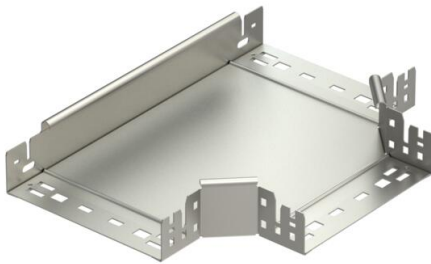
Technical data sheet

Magic tee 60 A2

Item number: 6041365



Magic Tee branch piece with quick connector system. For all cable tray types of 60 mm side height.



A2 Stainless steel

2B Bright, treated

Master data

Item number	6041365
Type	RTM 620 A2
Description 1	T-branch piece
Description 2	with quick connector
Manufacturer	OBO
Dimension	60x200
Material	Stainless steel 1.4301
Surface	Bright, treated
Surface standard	
Smallest sales unit	1
Unit of quantity	Piece
Weight	150.6 kg
Weight unit	kg/100 pc.

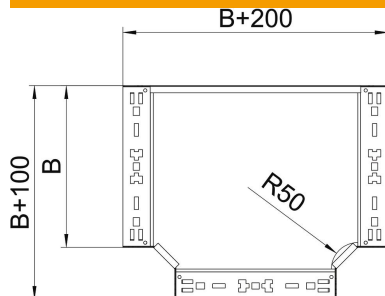
Technical data sheet

Magic tee 60 A2

Item number: 6041365



Dimensions



Width	200 mm
Height	60 mm
Plate thickness	1.25 mm
Dimension B	200 mm

Technical data

Bend (angle)	90°
Connector version	Integrated connector
Maintain electrical functions	no
NATO hole pattern	no
Change of direction	Horizontal
Rustproof steel, pickled	no
Wide-span version	no
Type of connector, cable support system	Screwed
Rail thickness	1.25 mm