

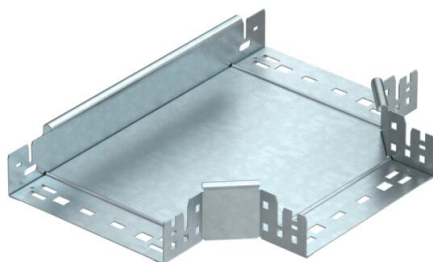
Technical data sheet

Magic tee 60 FT

Item number: 6041344



Tee branch piece with quick connector system. For all cable tray types of 60 mm side height.



St Steel

FT Hot-dip galvanised

Master data

Item number	6041344
Type	RTM 620 FT
Description 1	T-branch piece
Description 2	with quick connector
Manufacturer	OBO
Dimension	60x200
Material	Steel
Surface	Hot-dip galvanised
Surface standard	DIN EN ISO 1461
Smallest sales unit	1
Unit of quantity	Piece
Weight	161.5 kg
Weight unit	kg/100 pc.

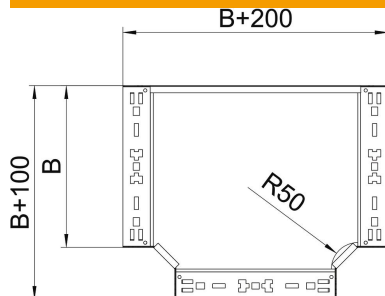
Technical data sheet

Magic tee 60 FT

Item number: 6041344



Dimensions



Width	200 mm
Width	8 in
Height	60 mm
Plate thickness	1.25 mm
Dimension B	200 mm

Technical data

Bend (angle)	90°
Connector version	Integrated connector
Maintain electrical functions	yes
NATO hole pattern	no
Change of direction	Horizontal
Rustproof steel, pickled	no
Wide-span version	no
Type of connector, cable support system	Screwed
Rail thickness	1.25 mm