

Technical data sheet

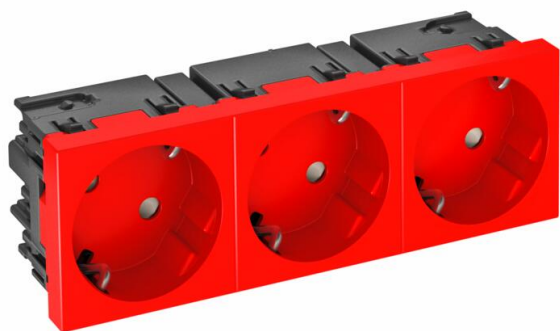
Socket 33°, Connect 45, protective contact, triple, signal red

Item number: 6120508



Power socket with side connection Triple 33°, with increased touch protection with screwless terminals, 2-pin, 16 A, 250 V~, with connection terminals to IEC 60884-1.

For installation in Rapid 45 ducts, device installation ducts, installation columns, underfloor systems and Deskboxes.



PC Polycarbonate

Master data

Item number	6120508
Type	STD-D3C SRO3
Description 1	Socket 33°, triple
Description 2	protective contact, Connect 45
Manufacturer	OBO
Dimension	250V, 10/16A
Colour	Signal red; RAL 3001
Material	Polycarbonate
Smallest sales unit	1
Unit of quantity	Piece
Weight	11.5 kg
Weight unit	kg/100 pc.
CO2 Footprint (GWP) Cradle-to-Gate	0,2883 kg COe / 1 Piece

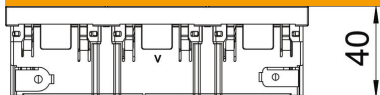
Technical data sheet

Socket 33°, Connect 45, protective contact, triple, signal red

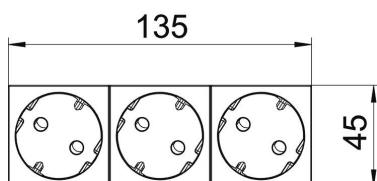
Item number: 6120508



Dimensions



Width	135 mm
Height	45 mm



Technical data

Cover	Central plate
Closable	no
Connection type	Screwless terminal
Number of units	3
Number of modules (for modular construction)	3
Number of switchable sockets	0
Number of poles	2
Printed label/coding	Without printing
Version for	Triple 33°
Surface version	Matt
Version for	SCHUKO
Ejection mechanism	no
Fastening type	Lock
Labelling panel	no
Operating temperature, max.	40 °C
Operating temperature, min.	-5 °C
increased touch protection	yes
Error current protection	no
For more difficult conditions (according to VDE)	no
Halogen-free	yes
Insulated installation	no
Hinged cover	no
Coding	no
Warning light	no
With on/off switch	no
With fine-wire fuse	no
With functional lighting	no
With orientation lighting	no
Mounting type	Device installation duct
Nominal voltage	250 V
Nominal current	16 A
Protection rating	Other
Special power supply	Without special power supply
Socket version	Protective contact

Technical data sheet

Socket 33°, Connect 45, protective contact, triple, signal red

Item number: 6120508



Technical data

Socket angle	33°
Depth	40 mm
Transparent	no
Rotated central insert	yes
Surge protection	no