

# Technical data sheet

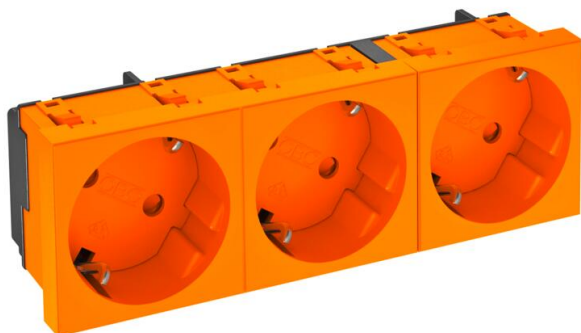
## 33° socket, protective contact, triple

Item number: 6120124



Power socket Triple 33°, with increased touch protection with screwless terminals, 2-pin, 16 A, 250 V~, with connection terminals to IEC 60884-1.

For installation in Rapid 45 ducts, device installation ducts, installation columns, underfloor systems and Deskboxes.



PC Polycarbonate

### Master data

|                                    |                         |
|------------------------------------|-------------------------|
| Item number                        | 6120124                 |
| Type                               | STD-D3 ROR3             |
| Description 1                      | Socket 33°, triple      |
| Description 2                      | protective contact      |
| Manufacturer                       | OBO                     |
| Dimension                          | 250V, 10/16A            |
| Colour                             | Pure orange; RAL 2004   |
| Material                           | Polycarbonate           |
| Smallest sales unit                | 1                       |
| Unit of quantity                   | Piece                   |
| Weight                             | 11 kg                   |
| Weight unit                        | kg/100 pc.              |
| CO2 Footprint (GWP) Cradle-to-Gate | 0,3936 kg COe / 1 Piece |

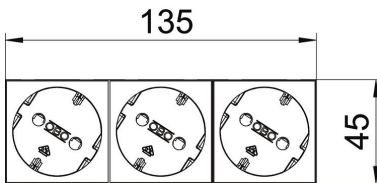
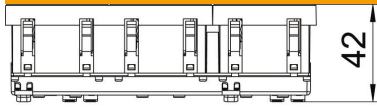
# Technical data sheet

33° socket, protective contact, triple

Item number: 6120124



## Dimensions



|        |        |
|--------|--------|
| Width  | 135 mm |
| Height | 45 mm  |

## Technical data

|  |                              |
|--|------------------------------|
| Cover  | Central plate                |
| Closable   | no                           |
| Connection type                                  | Screwless terminal           |
| Number of units                                  | 3                            |
| Number of modules (for modular construction)     | 0                            |
| Number of switchable sockets                     | 0                            |
| Number of poles                                  | 2                            |
| Printed label/coding                             | Without printing             |
| Version for                                      | Triple 33°                   |
| Surface version                                  | Matt                         |
| Version for                                      | SCHUKO                       |
| Ejection mechanism                               | no                           |
| Fastening type                                   | Lock                         |
| Labelling panel                                  | no                           |
| Operating temperature, max.                      | 40 °C                        |
| Operating temperature, min.                      | -5 °C                        |
| increased touch protection                       | yes                          |
| Error current protection                         | no                           |
| For more difficult conditions (according to VDE) | no                           |
| Halogen-free                                     | yes                          |
| Insulated installation                           | no                           |
| Hinged cover                                     | no                           |
| Coding   | no                           |
| Warning light                                    | no                           |
| With on/off switch                               | no                           |
| With fine-wire fuse                              | no                           |
| With functional lighting                         | no                           |
| With orientation lighting                        | no                           |
| Mounting type                                    | Device installation duct     |
| Nominal voltage                                  | 250 V                        |
| Nominal current                                  | 16 A                         |
| Protection rating                                | Other                        |
| Special power supply                             | Without special power supply |
| Socket version                                   | Protective contact           |
| Socket angle                                     | 33°                          |

# Technical data sheet

33° socket, protective contact, triple

Item number: 6120124



## Technical data

|                        |       |
|------------------------|-------|
| Depth                  | 42 mm |
| Transparent            | no    |
| Rotated central insert | yes   |
| Surge protection       | no    |