

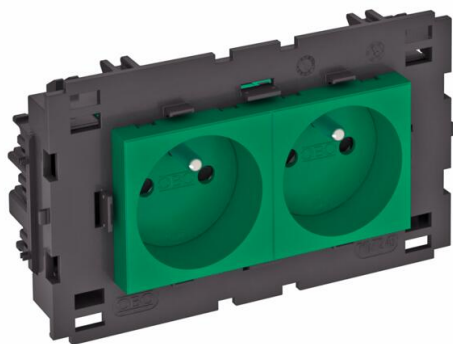
Technical data sheet

0° socket, Connect 80, with earthing pin, double

Item number: 6120626



Socket with earthing pin with side connection Double 0°, with increased touch protection with screwless terminals, 2-pin, 16 A, 250 V~, with connection terminals to IEC 60884-1, suitable for installation in Rapid 80 device installation trunking systems.
For installation in Rapid 45 trunking, device installation trunking, service poles, underfloor systems and desk boxes.



PC Polycarbonate

Master data

Item number	6120626
Type	STD-F0C8 MZGN2
Description 1	Socket 0°, double
Description 2	with earth pin, Connect 80
Manufacturer	OBO
Dimension	250V, 10/16A
Colour	Mint green; RAL 6029
Material	Polycarbonate
Smallest sales unit	1
Unit of quantity	Piece
Weight	13 kg
Weight unit	kg/100 pc.
CO2 Footprint (GWP) Cradle-to-Gate	0,5527 kg CO2e / 1 Piece

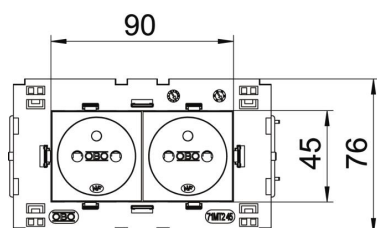
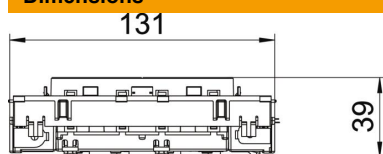
Technical data sheet

0° socket, Connect 80, with earthing pin, double

Item number: 6120626



Dimensions



Width	131 mm
Height	76 mm

Technical data

Cover	Central plate
Closable	no
Connection type	Screwless terminal
Number of units	2
Number of modules (for modular construction)	0
Number of switchable sockets	0
Number of poles	2
Printed label/coding	Without printing
Version for	Double 0°
Surface version	Matt
Version for	Protective contact pin
Ejection mechanism	no
Fastening type	Lock
Labelling panel	no
Operating temperature, max.	40 °C
Operating temperature, min.	-5 °C
increased touch protection	yes
Error current protection	no
For more difficult conditions (according to VDE)	no
Halogen-free	yes
Insulated installation	no
Hinged cover	no
Coding	no
Warning light	no
With on/off switch	no
With fine-wire fuse	no
With functional lighting	no
With orientation lighting	no
Mounting type	Device installation duct
Nominal voltage	250 V
Nominal current	16 A
Protection rating	Other

Technical data sheet

0° socket, Connect 80, with earthing pin, double

Item number: 6120626



Technical data

	Special power supply	Without special power supply
Socket version		NF
Socket angle		0°
Depth		39 mm
Transparent		no
Rotated central insert		no
Approvals		VDE
Surge protection		no