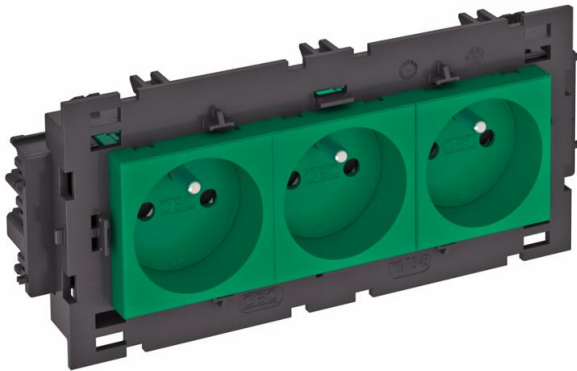


Technical data sheet

0° socket, Connect 80, with earthing pin, triple

Item number: 6120646



Earthing pin socket with connection to side, Triple 0°, with increased touch protection, with screwless terminals, 2-pin, 16 A, 250 V~, with connection terminals to IEC 60884-1, suitable for the installation in Rapid 80 device installation trunking systems.

For installation in Rapid 45 trunking, device installation trunking, service poles, underfloor systems and desk boxes.

PC Polycarbonate

Master data

| | |
|------------------------------------|----------------------------|
| Item number | 6120646 |
| Type | STD-F0C8 MZGN3 |
| Description 1 | Socket 0°, triple |
| Description 2 | with earth pin, Connect 80 |
| Manufacturer | OBO |
| Dimension | 250V, 10/16A |
| Colour | Mint green; RAL 6029 |
| Material | Polycarbonate |
| Smallest sales unit | 1 |
| Unit of quantity | Piece |
| Weight | 17.5 kg |
| Weight unit | kg/100 pc. |
| CO2 Footprint (GWP) Cradle-to-Gate | 0,7528 kg CO2e / 1 Piece |

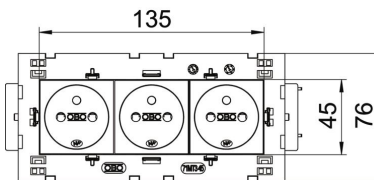
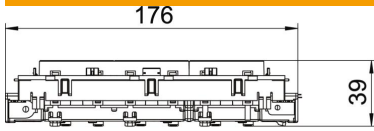
Technical data sheet

0° socket, Connect 80, with earthing pin, triple

Item number: 6120646



Dimensions



| | |
|--------|--------|
| Width | 176 mm |
| Height | 76 mm |

Technical data

| | |
|--|------------------------------|
| Cover | Central plate |
| Closable | no |
| Connection type | Screwless terminal |
| Number of units | 3 |
| Number of modules (for modular construction) | 0 |
| Number of switchable sockets | 0 |
| Number of poles | 2 |
| Printed label/coding | Without printing |
| Version for | Triple 0° |
| Surface version | Matt |
| Version for | Protective contact pin |
| Ejection mechanism | no |
| Fastening type | Lock |
| Labelling panel | no |
| Operating temperature, max. | 40 °C |
| Operating temperature, min. | -5 °C |
| increased touch protection | yes |
| Error current protection | no |
| For more difficult conditions (according to VDE) | no |
| Halogen-free | yes |
| Insulated installation | no |
| Hinged cover | no |
| Coding | no |
| Warning light | no |
| With on/off switch | no |
| With fine-wire fuse | no |
| With functional lighting | no |
| With orientation lighting | no |
| Mounting type | Device installation duct |
| Nominal voltage | 250 V |
| Nominal current | 16 A |
| Protection rating | Other |
| Special power supply | Without special power supply |
| Socket version | NF |
| Socket angle | 0° |

Technical data sheet

0° socket, Connect 80, with earthing pin, triple

Item number: 6120646



Technical data

| | |
|------------------------|-------|
| Depth | 39 mm |
| Transparent | no |
| Rotated central insert | no |
| Approvals | VDE |
| Surge protection | no |