

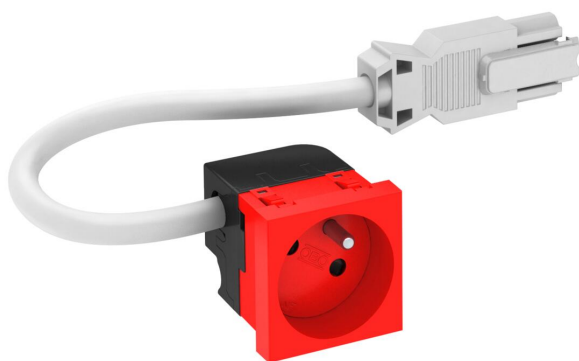
Technical data sheet

33° socket, Connect 45, with earthing pin, single

Item number: 6120876



Ready-for-connection protective contact socket Single 33°, with increased touch protection, incl. 0.25 m connection cable with GST18 connector and locking clip, 16 A, 250 V~.



For installation in Rapid 45 trunking, device installation trunking, service poles, underfloor systems and desk boxes.

PC Polycarbonate

Master data

Item number	6120876
Type	STD-F3C GW SRO1
Description 1	Socket 33°, single
Description 2	with earth pin, Connect 45
Manufacturer	OBO
Dimension	250V, 10/16A
Colour	Signal red; RAL 3001
Material	Polycarbonate
Smallest sales unit	1
Unit of quantity	Piece
Weight	10.3 kg
Weight unit	kg/100 pc.
CO2 Footprint (GWP) Cradle-to-Gate	0,2339 kg CO2e / 1 Piece

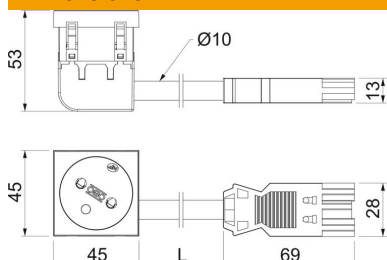
Technical data sheet

33° socket, Connect 45, with earthing pin, single

Item number: 6120876



Dimensions



Width	45 mm
Height	45 mm

Technical data

Cover	Central plate
Closable	no
Connection type	Screwless terminal
Number of units	1
Number of modules (for modular construction)	1
Number of switchable sockets	0
Printed label/coding	Without printing
Version for	Single 33°
Surface version	Matt
Version for	Protective contact pin
Ejection mechanism	no
Fastening type	Lock
Labelling panel	no
Operating temperature, max.	40 °C
Operating temperature, min.	-5 °C
increased touch protection	yes
Error current protection	no
For more difficult conditions (according to VDE)	no
Halogen-free	yes
Insulated installation	no
Hinged cover	no
Coding	no
Warning light	no
With on/off switch	no
With fine-wire fuse	no
With functional lighting	no
With orientation lighting	no
Mounting type	Installation
Nominal voltage	250 V
Nominal current	16 A
Protection rating	Other
Special power supply	Without special power supply
Socket version	NF
Socket angle	33°
Plug-in system	GST18
Depth	53 mm
Transparent	no
Rotated central insert	yes

Technical data sheet

33° socket, Connect 45, with earthing pin, single

Item number: 6120876



Technical data

Approvals	VDE
Surge protection	no