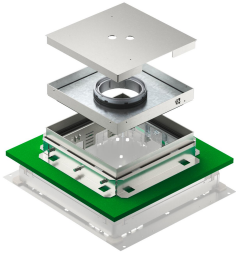


Technical data sheet

Height-adjustable, decouplable cassette for tube body,
stainless steel

Item number: 7409605



Height-adjustable and decouplable square cassette for floor-flush and seamless device installation in underfloor connection boxes UZD 250-4 (minimum installation depth 161 mm)/UGD55 250-3 (minimum installation depth 136 mm). Suitable for all cement screeds. Cassette frame with integrated lined body and height-adjustment function. The height of the cassette frame is adjusted to the top edge of the floor covering using four slots. Suitable for dry-, moist- or wet-cleaned floors. The cassette is fixed in the mounting cover by fastening brackets during screed/ Terrazzo work and is decoupled in all directions in the installed state. The cassette frame is made of stainless steel with a 25 mm-deep floor covering recess in the lid.

Height-adjustable cassette with tube body. For the installation of three UT4 universal supports for nine single devices with support ring/support clamp or 12 Modul 45® devices. The scope of delivery contains an aluminium screed protection cover (grindable), a suitable mounting lid to fix the cassette lined body and an ISO apron for decoupling from the underfloor connection socket. The tube body is not contained in the scope of delivery.



A2 Stainless steel

Master data

Item number	7409605
Type	TRKFN 9 VS 250
Description 1	Square cassette seamless floor
Description 2	rectangular, tube body
Manufacturer	OBO
Dimension	243x243x83
Material	Stainless steel
Smallest sales unit	1
Unit of quantity	Piece
Weight	724.2 kg
Weight unit	kg/100 pc.
CO2 Footprint (GWP) Cradle-to-Gate	42,6229 kg CO2e / 1 Piece

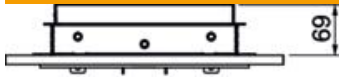
Technical data sheet

Height-adjustable, decouplable cassette for tube body,
stainless steel

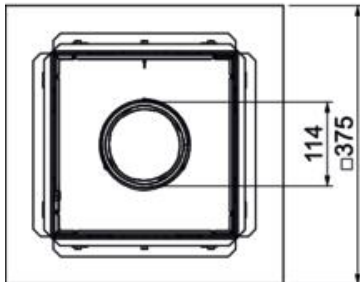
Item number: 7409605



Dimensions



Length	243 mm
Width	243 mm
Height	81 mm



Technical data

Number of installable devices	12
Number of cable outlets	1
Number of universal supports	3 x UT4
Version for	Square
Cable outlet version	Lowerable tube body
Floor care	Wet
Decouplable	yes
Screed height, max.	110 mm
Screed height, min.	69 mm
Floor height, min.	136 mm
Suitable for raised floor installation	no
Suitable for cavity floor installation	no
Suitable for	Underfloor socket structure
Suitable for underfloor box	250
Device support to accept mounting boxes	no
Nominal size for device installation units	9
Height-adjustment range, max.	110 mm
Height-adjustment range, min.	69 mm
Standard	EN 50085-2-2
Protection rating (IP) when used	IP20
Protection rating (IP) when unused	IP55
Protection rating IK code	IK10
Heavy-duty version	no
Installation system type	UT4
Vertical load, large area	to 5,000 N
Vertical load, small area	to 3,000 N
Approvals	VDE
Floor covering thickness	25 mm