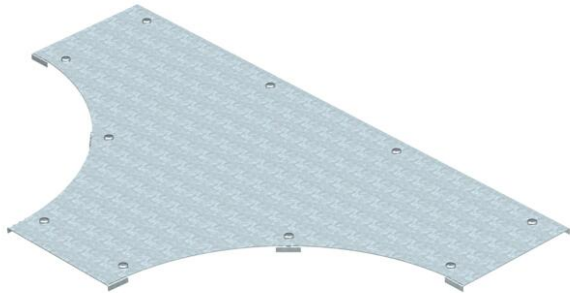


Technical data sheet

Cover for T branch piece DD



Item number: 6231675



Cover for wide span T branch piece with pre-mounted turn buckles.
As the connector is mounted from the outside, the fitting cover is 300 mm shorter than the corresponding fitting. This must be considered when installing the track elements.



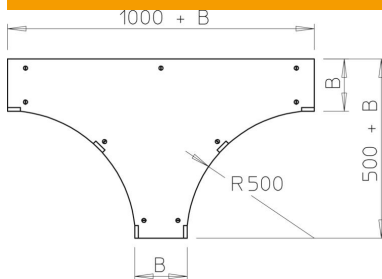
St Steel

DD Strip galvanised zinc/aluminium, Double Dip

Master data

Item number	6231675
Type	WDTRL 300 DD
Description 1	Cover, T-branch piece
Description 2	wide span system 110 and 160
Manufacturer	OBO
Dimension	B300mm
Colour	zinc
Material	Steel
Surface	Strip galvanised zinc/aluminium, Double Dip
Surface standard	DIN EN 10346
Smallest sales unit	1
Unit of quantity	Piece
Weight	550 kg
Weight unit	kg/100 pc.
CO2 Footprint (GWP) Cradle-to-Gate	24,5178 kg CO2e / 1 Piece

Dimensions



Width	300 mm
Plate thickness	1 mm
Dimension B	300 mm
Dimension H	15 mm

Technical data sheet

Cover for T branch piece DD

Item number: 6231675



Technical data

Number of turn buckles	9 St.
Fastening type	Sash lock
Suitable for cable ladder	yes
Suitable for cable tray	yes
Material thickness	1 mm
Rustproof steel, pickled	no