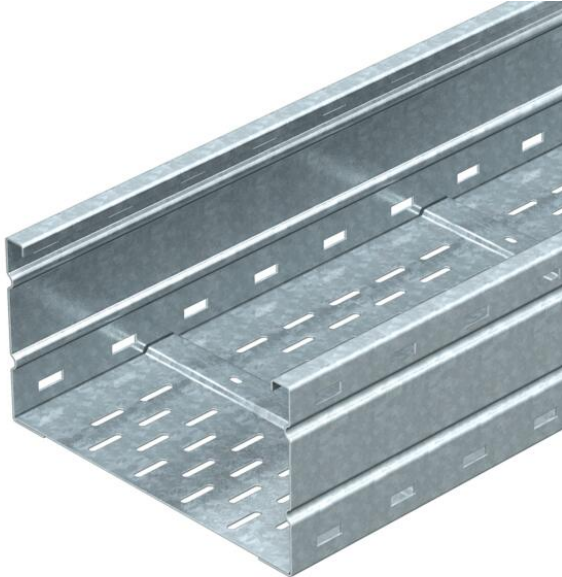


Technical data sheet

Wide span cable tray WKSG 160 FS

Item number: 6098509



Wide span cable tray system, perforated, with a side height of 160 mm. Straight connectors of type WRV 160 should be ordered separately and in the appropriate quantity. Magnetic shield insulation without cover 20 dB, with cover 50 dB.



- St** Steel
- FS** Strip galvanized

Master data

Item number	6098509
Type	WKSG 164 FS
Description 1	Wide span cable tray
Description 2	perforated, floor beaded
Manufacturer	OBO
Dimension	160x400x6000
Colour	zinc
Material	Steel
Surface	Strip galvanized
Surface standard	DIN EN 10346
Smallest sales unit	6
Unit of quantity	Metre
Weight	1108.34 kg
Weight unit	kg/100 m
CO2 Footprint (GWP) Cradle-to-Gate	25,6643 kg CO2e / 1 Meter

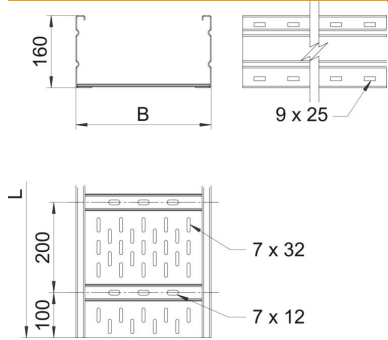
Technical data sheet

Wide span cable tray WKSG 160 FS

Item number: 6098509



Dimensions



Dimension	160 x 400
Length	6,000 mm
Width	400 mm
Height	160 mm
Plate thickness	2 mm
Dimension B	400 mm
Dimension L	6,000 mm

Technical data

Connector version	Without connectors
Mounting system fastening type	Floor Ceiling Wall
Maintain electrical functions	no
Mounting perforation in base	yes
Usable cross-section	608 cm ²
Usable cross-section	60800 mm ²
Rustproof steel, pickled	no
Side perforation	yes
Wide-span version	yes
Magnetic shield insulation without cover	20 dB
Magnetic shield insulation with cover	50 dB
Usable length	6000 mm
Type of connector, cable support system	Screwed

Technical data sheet

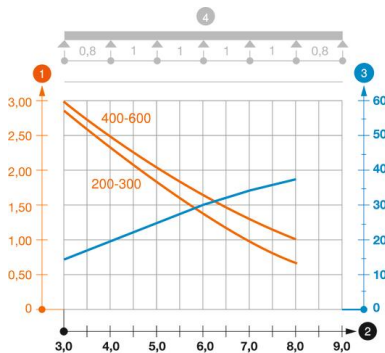
Wide span cable tray WKSG 160 FS

Item number: 6098509



Loads

Insertable support spacings, min.	3 m
Insertable support spacings, max.	8 m
Support spacing 3.0 m	3 kN/m
Support spacing 3.5 m	2.73 kN/m
Support spacing 4.0 m	2.5 kN/m
Support spacing 4.5 m	2.24 kN/m
Support spacing 5.0 m	2 kN/m
Support spacing 6.0 m	1.6 kN/m
Support spacing 7.0 m	1.3 kN/m
Support spacing 8.0 m	1 kN/m



Load diagram, wide span cable tray, type WKSG 160

- 1** Permitted cable tray/ladder load in kN/m without man load
- 2** Support width in m
- 3** Rail bend in mm at permitted kN/m
- 4** Load scheme during testing
- Load curve with cable tray/ladder width in mm
- Strut bend curve according to support width